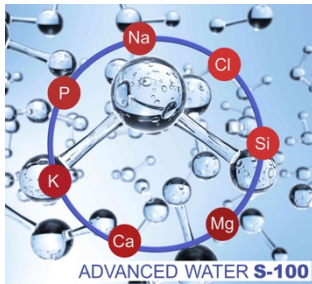


**Free samples Advanced Water Gel CC6**



**Advanced Water actively supports gingival balance.**

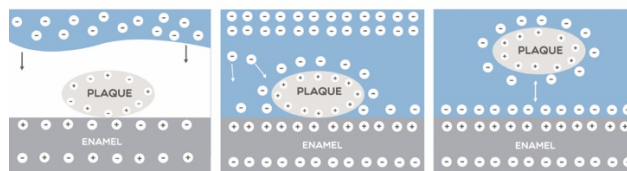
Thanks to its unique mineralization combined with high and totally safe pH, Advanced Water S-100 offers top solutions for smart skin cleansing, antibacterial effect and repair. It plays key-role in supporting cell's ionic and pH balancing.

All Advanced Water products are preservative-free.

**Example of Water Gel CC6 effectiveness on dental plaque when used as a tooth gel**

Principle of cleaning by repulsion force:

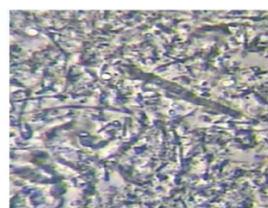
1. Dental plaque build-up on enamel surface.
2. Once in contact with CC6, ionic interactions between molecules attract negative ions on the surface of the dental plaque and enamel.
3. Dental plaque is removed by repulsion force (negative-negative charges)



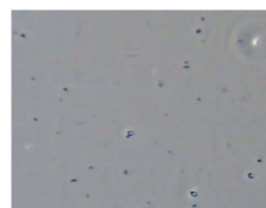
**Advice for use**

**Advanced Water GEL CC6 : Periodontitis** (care and cleansing) : toothbrushing for approx. 2 minutes with 1g of Gel CC6 followed by water rinsing.

**Antibacterial effect against periodontal bacteria P. Gingivalis :**



**Sample image before use**  
(P-teck phase microscope P-Scope PRO used)



**Sample image after use**  
(P-teck phase microscope P-Scope PRO used)

**BACTERICIDAL EFFECT OF S-100 AND CC-6 AGAINST P.GINGIVALS**

	Control (0.3% NaCL aq)				S-100			Control (0.3% NaCL aq)				CC6		
	0 sec	15 sec	30 sec	1min	15 sec	30 sec	1 min	0 sec	15 sec	30 sec	1 min	15 sec	30 sec	1 min
Colony counting (CFU) (1cm²)	43	78	33	57	-	-	-	40	28	45	24	-	-	-
Petri dish (CFU) (56.72cm²)	2439	4424	1872	3233	0	0	0	2269	1588	2552	1361	0	0	0
1: GAM Bouillon * (CFU/mL)	24390	44242	18718	32330	0	0	0	22688	15882	25524	13613	0	0	0
* 2 (CFU/mL)	2.4x10 <sup>4</sup>	4.4x10 <sup>4</sup>	1.9x10 <sup>4</sup>	3.2x10 <sup>4</sup>	0	0	0	2.3x10 <sup>4</sup>	1.6x10 <sup>4</sup>	2.6x10 <sup>4</sup>	1.4x10 <sup>4</sup>	0	0	0